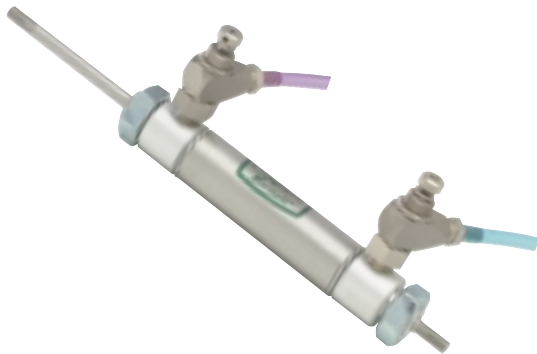




FLOW CONTROL VALVES

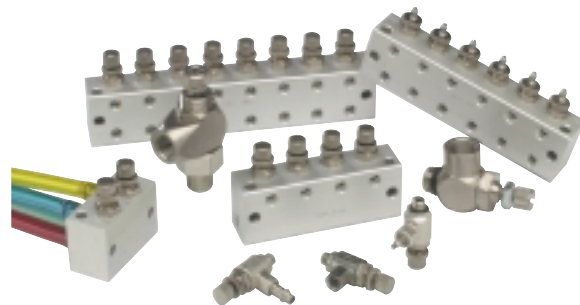
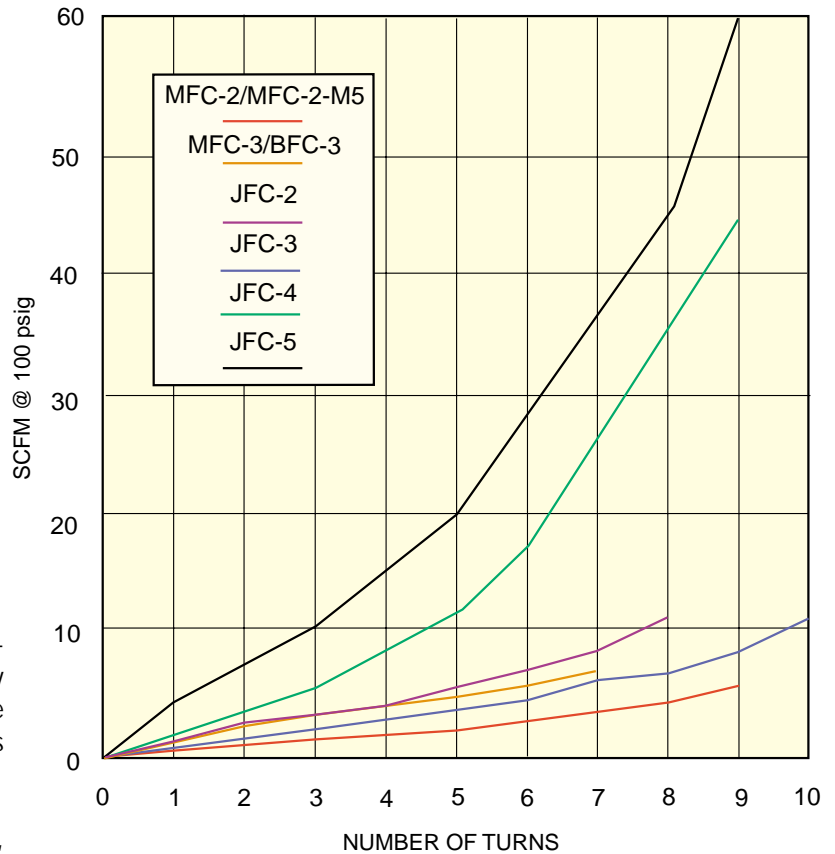
Flow Controls Flow vs. Needle Turns



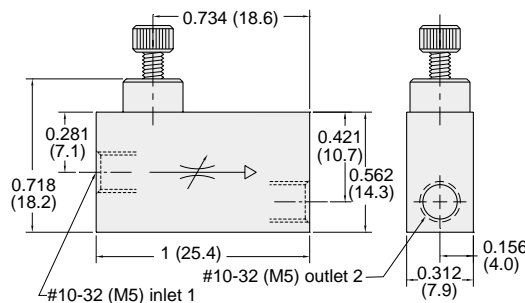
Clippard offers five models of adjustable flow controls with #10-32 through 3/8" NPT ports. They feature a combination needle and check valve that controls flow in one direction and allows free flow in the opposite direction.

They are an ideal valve for use with a cylinder, providing a slow extend stroke while allowing a fast retract stroke. The chart on this page illustrates the flow versus the number of needle adjustments turns for the MFC-2, MFC-2-M5, MFC-3, BFC-3, JFC-2, JFC-3, JFC-4 and JFC-5.

Medium: Air, Water or Oil



Adjustable Flow Control Valve



Materials: Brass body and stainless steel needle; Buna-N seals

Input Pressure: 300 psig max.

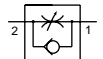
Air Flow: 4 SCFM max. @ 50 psig; 7 SCFM max. @ 100 psig

Pressure To Open: Cracks at approx. 2 psig

Mounting: Direct or inline

Flow Direction: Arrow in valve body shows direction of controlled flow

Adjustment: Knurled knob on needle shaft



Part No. Description

MFC-2Adjustable Flow Control Valve, #10-32

MFC-2-M5 . . .Adjustable Flow Control Valve, M5